



## **Pencil Portrait Workshop with**

**Artist Jill Illiffe**

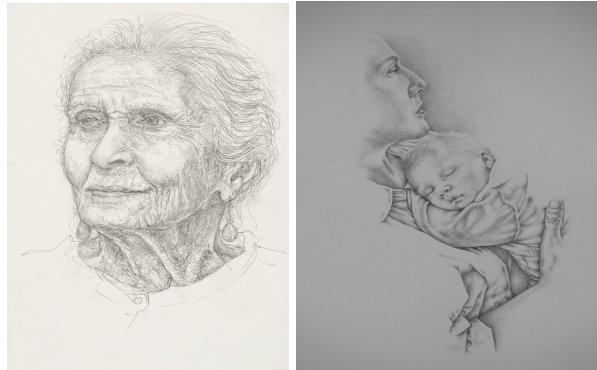
**Tuesday afternoon workshop 1.30 - 4pm on**

**Tuesday February 24th 2026**

**St John the Evangelist Church Hall**

**Upper St Michael's Grove Fareham PO14 1DN**

**Cost £20, plus normal weekly fees**



Jill Illiffe will be leading a workshop in drawing portraits. She will cover proportion, line-work, shading and how to gain a likeness. There will also be the option of drawing a portrait using the grid technique. Although the main focus will be on using graphite pencils you may bring coloured pencils to work with too. Jill is a very experienced art tutor, is a member of the Society of Graphic Fine Arts, has taken part in Sky Portrait Artist of the Year and has an MA in Drawing. You can see her work on her website [www.jillilliffe.co.uk](http://www.jillilliffe.co.uk) and her Instagram account [jill\\_illiffe\\_art](https://www.instagram.com/jill_illiffe_art)

Jill will provide a photograph to work from or students can bring along their own. This workshop is suitable for artists of all abilities so no experience necessary.

Demand is likely to be high and places will be limited. **Booking is available via the on-line link** included in this email. **To reserve your place on a first come basis full payment of £20 must be made** online to Fareham Art Group Sort Code 40-21-03 Account Number 21695592 or can be made in cash at the Tuesday sessions or via workshop voucher purchase. If subsequently you cannot attend please give us as much notice and we may be able to fill your place, in which case a full refund will be given.

**Please note no confirmation of booking will be issued until we reach minimum numbers required to be able to provide this event, together with any workshop specific joining instructions, including any suggested materials.**

